

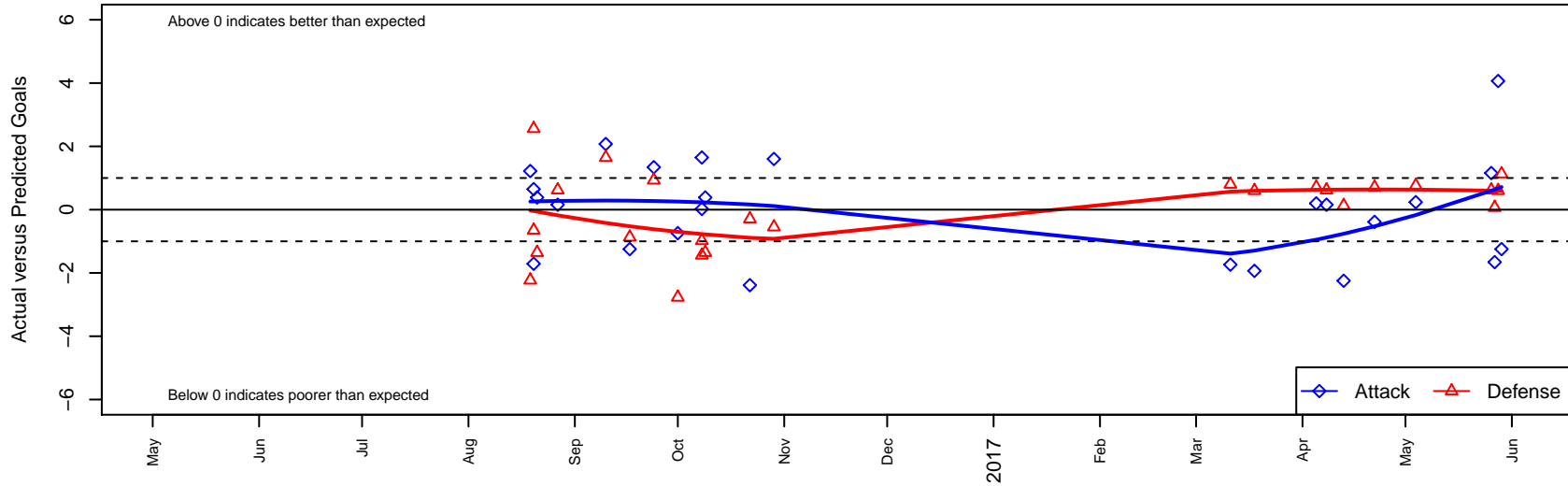
Idaho Rush Premier B03

Idaho Rush Soccer
 Boise, ID
 B03 total strength=1438
 attack=8.89 defense=9.35
 fall league = Idaho D3 U14/U15 Div 1 U15
 spr league = Spr Idaho D3 U13/U14 Div 1

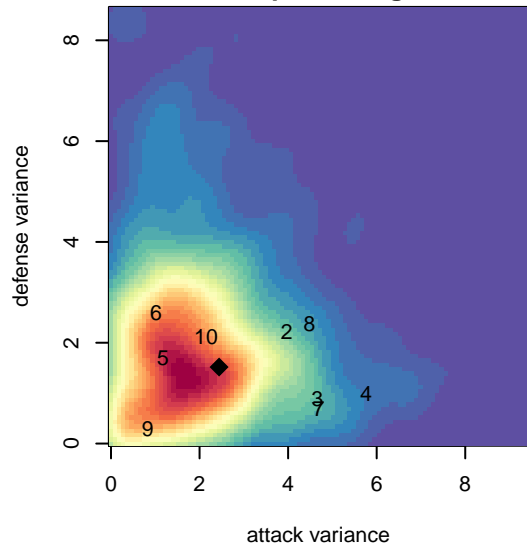
alt names used:
 IDAHO RUSH IDAHO RUSH PREMIER (2003)
 IDAHO RUSH PREMIER (2003)
 IDAHO RUSH PREMIER (2003) (ID)

Venues played:
 2016 NWCL 03
 2016 Idaho D3 U14/U15 Div 1 U15
 2016 Spr Idaho D3 U13/U14 Division 1
 2016 ID State Cup U14

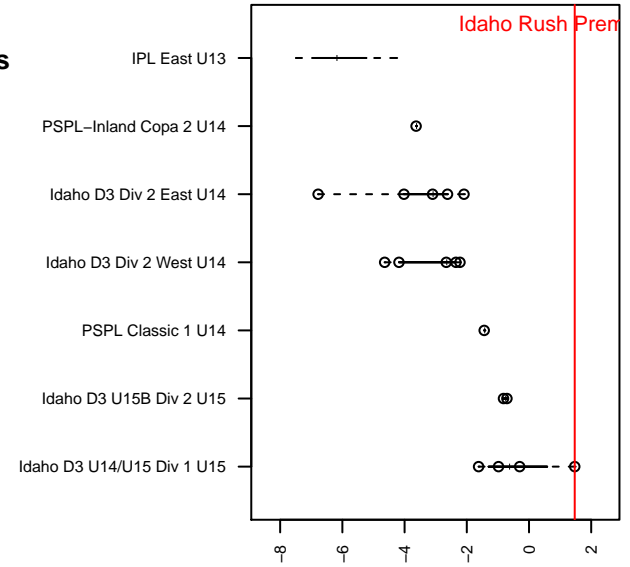
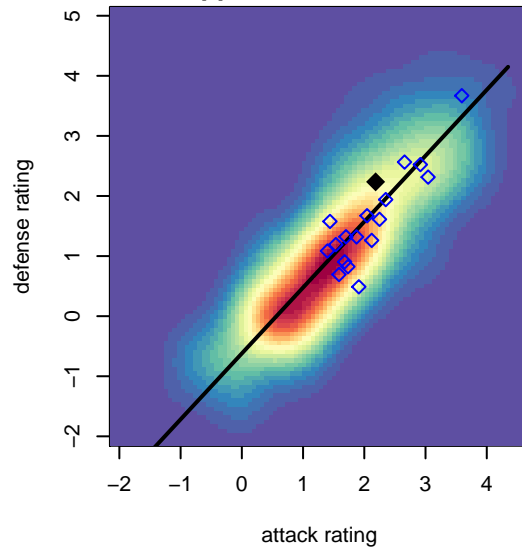
Idaho Rush Premier B03
 Dots are actual minus expected GF (blue circles) and GA (red triangles).
 Blue line is smoothed change in attack strength. Red is smoothed change in defense strength.



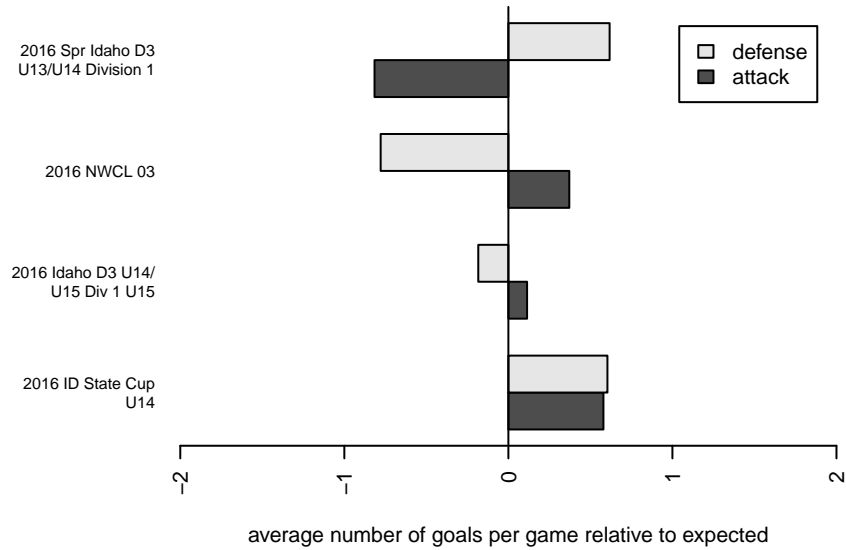
**attack and defense variance (black dot)
relative to other teams
and top 10 in region**



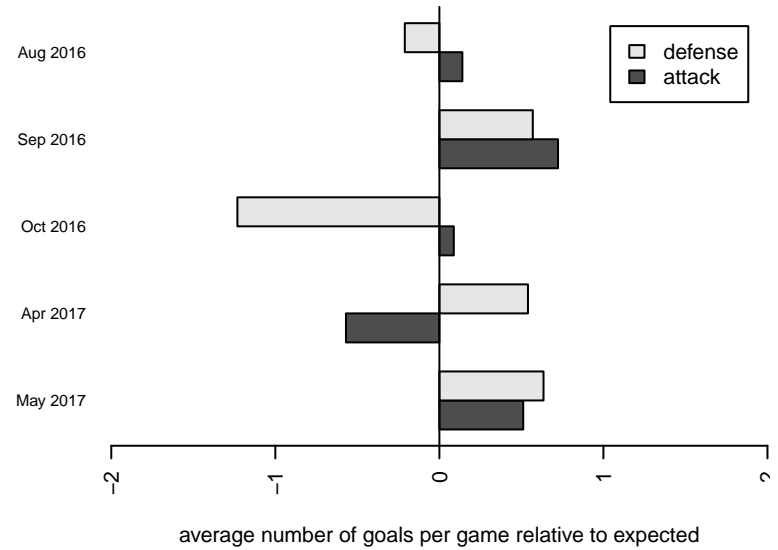
**attack and defense rating
relative to others at age
and all opponents in last 13 months**



Performance relative to 13 month average



Performance relative to 13 month average



| date | home | | away | | venue | pred.home | pred.away |
|-------------|----------------------------------|---|----------------------------------|---|--------------------------------------|------------------|------------------|
| 2017-05-29 | Boise Nationals Timbers Blue B03 | 0 | Idaho Rush Premier B03 | 1 | 2016 ID State Cup U14 | 1.13 | 2.25 |
| 2017-05-28 | CGA Academy SC Sounders B03 | 0 | Idaho Rush Premier B03 | 7 | 2016 ID State Cup U14 | 0.60 | 2.93 |
| 2017-05-27 | Sting SC Timbers Red B03 | 1 | Idaho Rush Premier B03 | 4 | 2016 ID State Cup U14 | 1.07 | 5.66 |
| 2017-05-26 | FC Nova Gold B03 | 0 | Idaho Rush Premier B03 | 4 | 2016 ID State Cup U14 | 0.62 | 2.84 |
| 2017-05-04 | FC Nova Gold B04 | 0 | Idaho Rush Premier B03 | 4 | 2016 Spr Idaho D3 U13/U14 Division 1 | 0.76 | 3.76 |
| 2017-04-22 | Idaho Rush Premier B03 | 4 | Idaho Rush Nero B03 | 0 | 2016 Spr Idaho D3 U13/U14 Division 1 | 4.39 | 0.70 |
| 2017-04-13 | Idaho Rush Premier B03 | 0 | Boise Nationals Timbers Blue B03 | 1 | 2016 Spr Idaho D3 U13/U14 Division 1 | 2.25 | 1.13 |
| 2017-04-08 | FC Nova Gold B03 | 0 | Idaho Rush Premier B03 | 3 | 2016 Spr Idaho D3 U13/U14 Division 1 | 0.62 | 2.84 |
| 2017-04-05 | Idaho Rush Premier B04 | 0 | Idaho Rush Premier B03 | 2 | 2016 Spr Idaho D3 U13/U14 Division 1 | 0.71 | 1.80 |
| 2017-03-18 | CGA Academy SC Sounders B03 | 0 | Idaho Rush Premier B03 | 1 | 2016 Spr Idaho D3 U13/U14 Division 1 | 0.60 | 2.93 |
| 2017-03-11 | Boise Nationals Timbers Blue B04 | 0 | Idaho Rush Premier B03 | 3 | 2016 Spr Idaho D3 U13/U14 Division 1 | 0.80 | 4.74 |
| 2016-10-29 | Idaho Rush Premier B03 | 4 | FC Nova Gold B02 | 2 | 2016 Idaho D3 U14/U15 Div 1 U15 | 2.40 | 1.45 |
| 2016-10-22 | Idaho Rush Nero B03 | 1 | Idaho Rush Premier B03 | 2 | 2016 Idaho D3 U14/U15 Div 1 U15 | 0.70 | 4.39 |
| 2016-10-09 | Wenatchee FC Black B03 | 3 | Idaho Rush Premier B03 | 2 | 2016 NWCL 03 | 1.65 | 1.61 |
| 2016-10-08 | Crossfire Premier A B03 | 7 | Idaho Rush Premier B03 | 2 | 2016 NWCL 03 | 5.56 | 0.35 |
| 2016-10-08 | Idaho Rush Premier B03 | 1 | WPFC Black B03 | 4 | 2016 NWCL 03 | 0.98 | 3.02 |
| 2016-10-01 | Idaho Rush Premier B03 | 0 | Boise Nationals Timbers Blue B02 | 5 | 2016 Idaho D3 U14/U15 Div 1 U15 | 0.74 | 2.23 |
| 2016-09-24 | Idaho Storm Thunder B02 | 0 | Idaho Rush Premier B03 | 4 | 2016 Idaho D3 U14/U15 Div 1 U15 | 0.93 | 2.66 |
| 2016-09-17 | Boise Nationals Timbers Blue B03 | 2 | Idaho Rush Premier B03 | 1 | 2016 Idaho D3 U14/U15 Div 1 U15 | 1.13 | 2.25 |
| 2016-09-10 | Idaho Rush Premier B02 | 0 | Idaho Rush Premier B03 | 4 | 2016 Idaho D3 U14/U15 Div 1 U15 | 1.65 | 1.93 |
| 2016-08-27 | Idaho Rush Premier B03 | 3 | FC Nova Gold B03 | 0 | 2016 Idaho D3 U14/U15 Div 1 U15 | 2.84 | 0.62 |
| 2016-08-21 | Idaho Rush Premier B03 | 2 | Wenatchee FC Black B03 | 3 | 2016 NWCL 03 | 1.61 | 1.65 |
| 2016-08-20 | Idaho Rush Premier B03 | 1 | Crossfire Premier A B03 | 3 | 2016 NWCL 03 | 0.35 | 5.56 |
| 2016-08-20 | Idaho Rush Premier B03 | 0 | Spokane Sounders A B03 | 2 | 2016 NWCL 03 | 1.71 | 1.35 |
| 2016-08-19 | Idaho Rush Premier B03 | 2 | NW United Black B03 | 5 | 2016 NWCL 03 | 0.78 | 2.77 |